

TECNICO[®]
N A T U R A L L I G H T

Thessaly Raso

_blank design studio

_T390

_T391

_T392

_T393

_T410

_T411

T390 Thessaly Raso

Aluminium ring - **Matte black**



T391 Thessaly Raso

Aluminium ring - **Matte white**



T392 Thessaly Raso

Aluminium ring - **Brushed brass**



T393 Thessaly Raso

Aluminium ring - **Brushed copper**



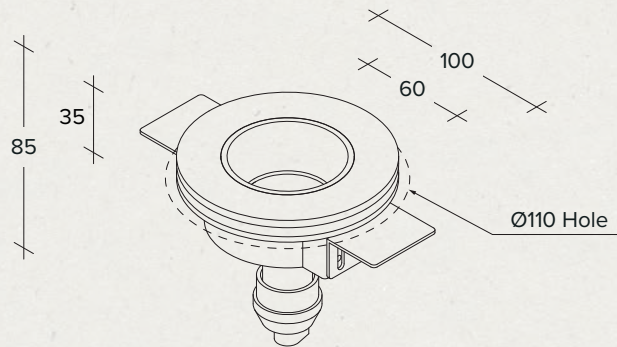
T410 Thessaly Raso

Aluminium ring - **Brushed aluminium**







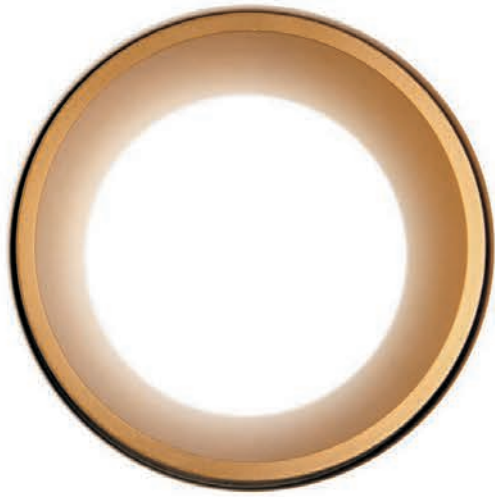
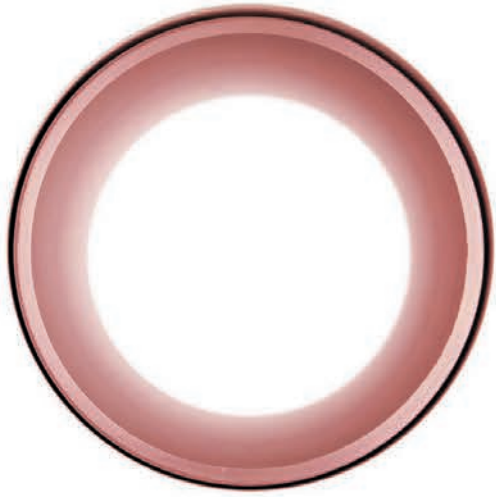
T411 Thessaly Raso

Aluminium ring - **Brushed bronze**



Flush recessed plaster spotlight with aluminium ring

Designed by	_blank design studio
Material / Materiale / Material / Material / Материал	Plaster and aluminium / Gesso e alluminio / Gips und Aluminium / Yeso y aluminio / Гипс и алюминий
Light source / Fonte di luce / Lichtquelle / Fuente de luz / Источник света	GU10 1 x 40W
Type-approvals / Omologazioni / Zulassungen / Homologaciones / Разрешения	   





T390 Thessaly Raso

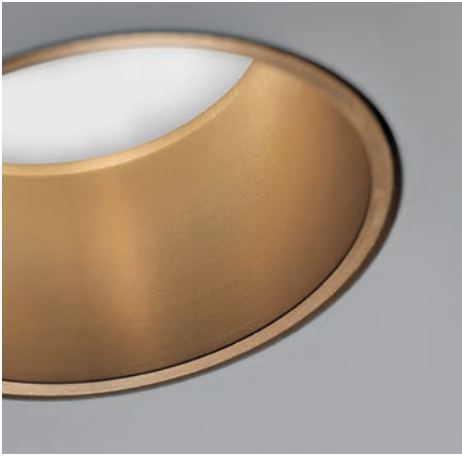
Flush recessed plaster spotlight
with matte black painted ring finishing
GU10 - 1x40W
Ø60 mm aluminium ring





391 Thessaly Raso

Flush recessed plaster spotlight
with matte white painted ring finishing
CU10 – 1x40W
Ø60 mm aluminium ring

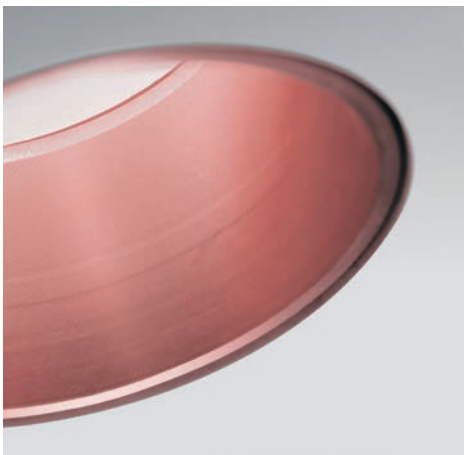
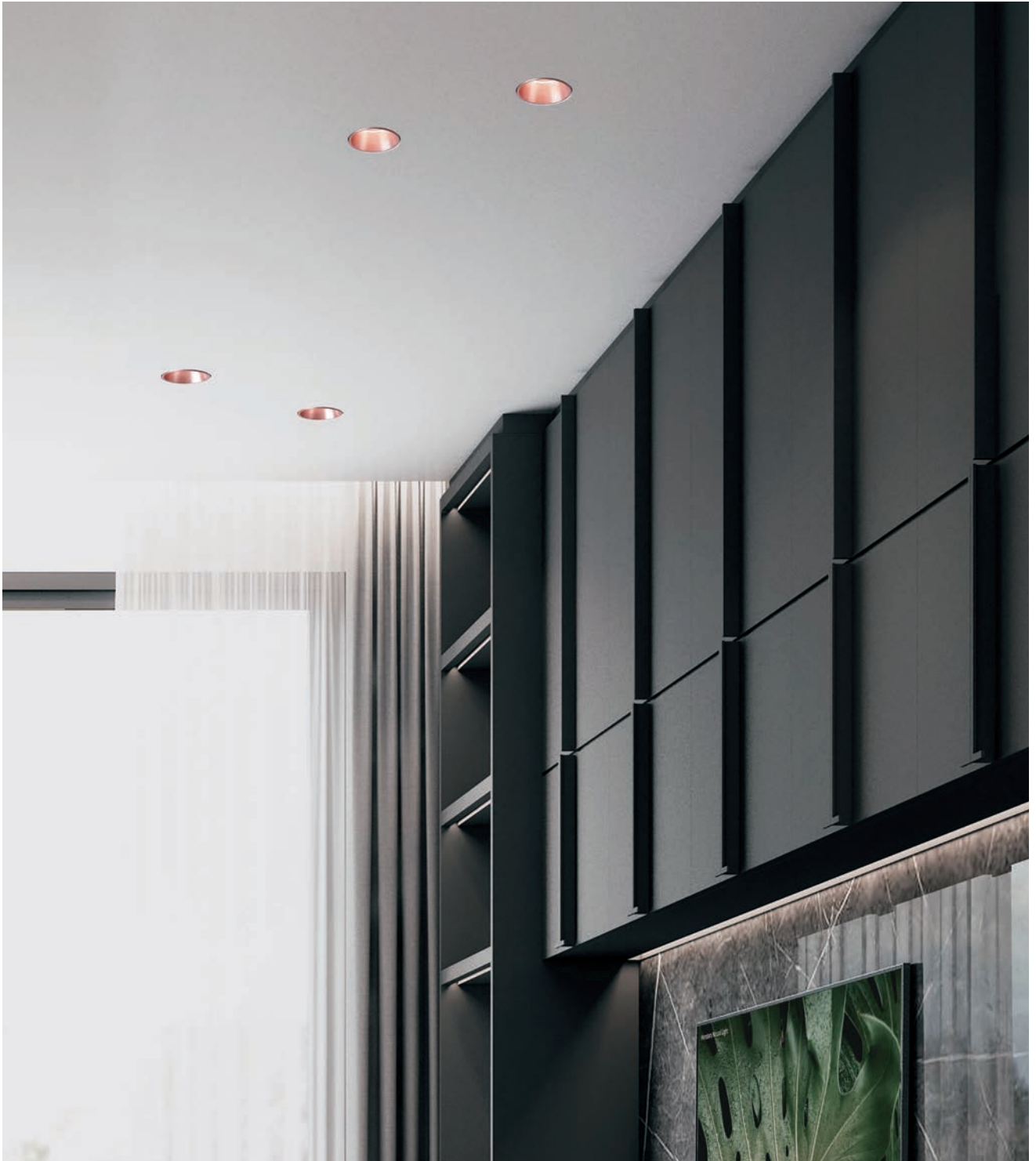


↑ ↑ →

T392 Thessaly Raso

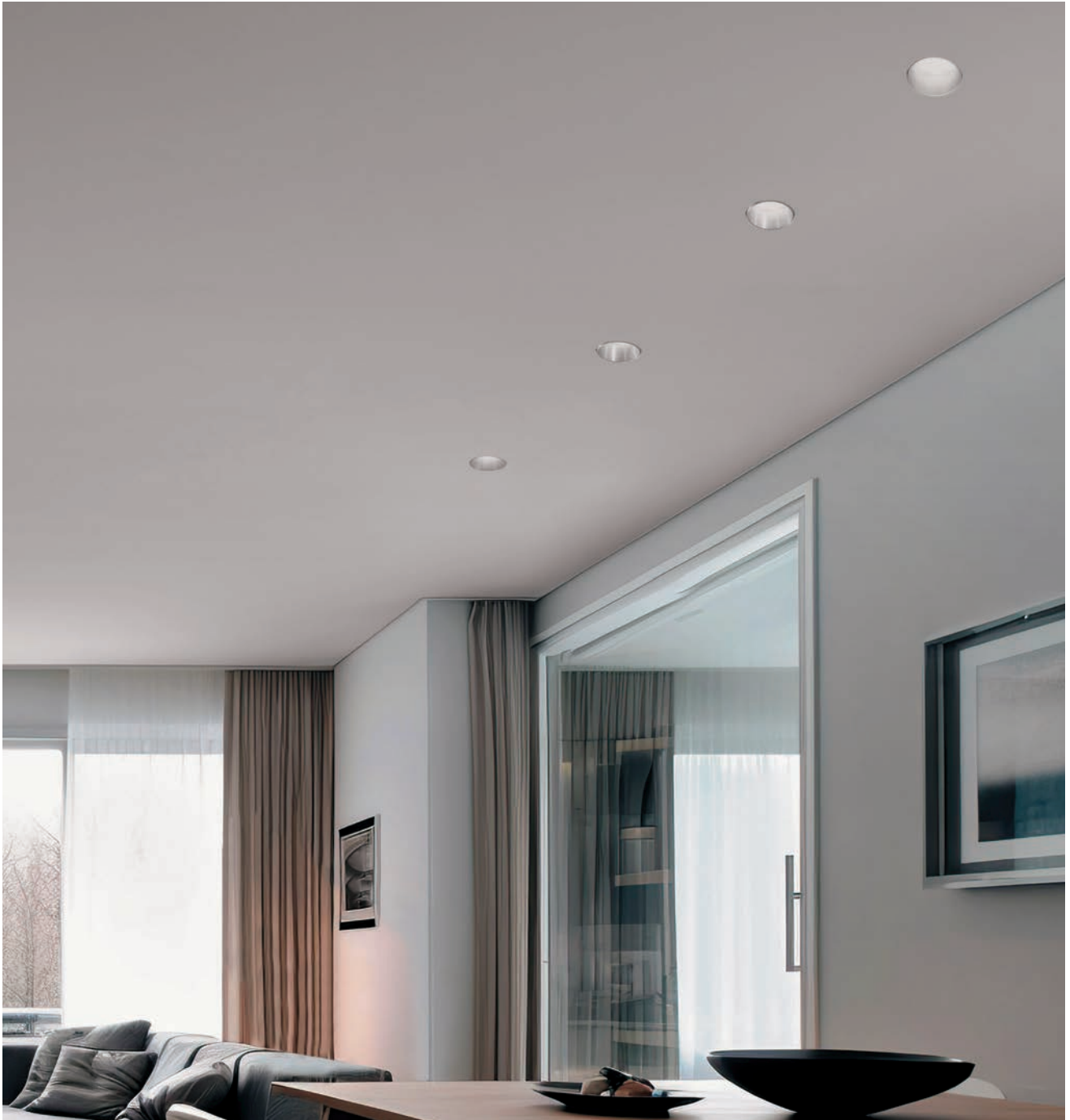
Flush recessed plaster spotlight
with brushed brass ring finishing
GU10 - 1x40W
Ø60 mm aluminium ring





T393 Thessaly Raso

Flush recessed plaster spotlight
with brushed copper ring finishing
GU10 – 1x40W
Ø60 mm aluminium ring



T410 Thessaly Raso

Flush recessed plaster spotlight
with brushed aluminium ring finishing
GU10 - 1x40W
Ø60 mm aluminium ring





T411 Thessaly Raso

Flush recessed plaster spotlight
with brushed bronze ring finishing
GU10 - 1x40W
Ø60 mm aluminium ring

